

REVIEW

Understanding acceptability of and engagement with Web-based interventions aiming to improve quality of life in cancer survivors: A synthesis of current research

Teresa Corbett¹  | Karpaul Singh¹ | Liz Payne¹ | Katherine Bradbury¹ | Claire Foster² | Eila Watson³ | Alison Richardson⁴ | Paul Little⁵ | Lucy Yardley^{1,6}

¹Centre for Clinical and Community Applications of Health Psychology (CCCAHP), University of Southampton, Southampton, UK

²Faculty of Health Sciences, University of Southampton, Southampton, UK

³Department of Applied Health and Professional Development, Faculty of Health and Life Sciences, Oxford Brookes University, Oxford, UK

⁴Faculty of Health Sciences, University Hospital Southampton NHS Foundation Trust, University of Southampton, Southampton, UK

⁵Primary Care and Population Sciences, Aldermoor Health Centre, Aldermoor Close, Southampton, UK

⁶Nuffield Department of Primary Care Health Sciences, University of Oxford, Oxford, UK

Correspondence

Teresa Corbett, Centre for Clinical and Community Applications of Health Psychology (CCCAHP), University of Southampton, Southampton, UK.

Email: T.K.Corbett@soton.ac.uk

Funding information

National Institute for Health Research (NIHR), Grant/Award Number: RP-PG-0514-20001

Abstract

Objective: This review sought to summarize existing knowledge to inform the development of an online intervention that aims to improve quality of life after cancer treatment.

Methods: To inform our intervention, we searched for studies relating to Web-based interventions designed to improve quality of life in adults who have completed primary treatment for breast, prostate, and colorectal cancer (as these are 3 of the most common cancers and impact a large number of cancer survivors). We included a variety of study designs (qualitative research, feasibility/pilot trials, randomized trials, and process evaluations) and extracted all available information regarding intervention characteristics, experiences, and outcomes. Data were synthesized as textual (qualitative) data and analyzed by using thematic analysis.

Results: Fifty-seven full text articles were assessed for eligibility, and 16 papers describing 9 interventions were analyzed. Our findings suggest that cancer survivors value interventions that offer content specific to their changing needs and are delivered at the right stage of the cancer trajectory. Social networking features do not always provide added benefit, and behavior change techniques need to be implemented carefully to avoid potential negative consequences for some users.

Conclusions: Future work should aim to identify appropriate strategies for promoting health behavior change, as well as the optimal stage of cancer survivorship to facilitate intervention delivery.

Clinical Implications: The development of Web-based interventions for cancer survivors requires further exploration to better understand how interventions can be carefully designed to match this group's unique needs and capabilities. User involvement during development may help to ensure that interventions are accessible, perceived as useful, and appropriate for challenges faced at different stages of the cancer survivorship trajectory.

KEYWORDS

cancer, digital intervention, intervention development, oncology, review, survivorship, Web-based

1 | BACKGROUND

The number of cancer survivors is increasing as a consequence of earlier diagnoses and advances in treatment.¹ The period following primary treatment is a critical time in the cancer trajectory, often characterized by ongoing symptoms and poor health.^{2,3} Prolonged symptoms lead to ongoing challenges for cancer survivors and delay

return to daily routine.⁴ The Internet is increasingly being used as a resource by cancer survivors⁵ as Web-based interventions can provide an efficient method of improving support.⁶ These interventions can incorporate multiple behavior change techniques, while overcoming obstacles to seeking support after cancer such as time, mobility, and geography.⁷ Web-based interventions for cancer patients have been associated with improvements in quality of life (QoL; including

psychological and physical well-being).^{8,9} We sought to synthesize the growing evidence base that relates to Web-based interventions directed at improving QoL in cancer survivors, to inform the development of an acceptable and feasible new intervention for breast, prostate, and colorectal cancer survivors. The intervention is focused on these cancers as they are 3 of the most common cancers and impact a large number of cancer survivors.¹

Previous reviews of interventions for cancer survivors have focused on questions of effectiveness, by reviewing controlled trials.¹⁰⁻¹² However, much of the literature on Web-based interventions for cancer survivors reports early-stage research, consisting mainly of intervention development and feasibility studies. Systematic reviews are useful to synthesize research findings¹³ but are most appropriate when a strong evidence base (of homogenous datasets) exists.^{14,15} Reviews of heterogeneous, complex interventions frequently conclude that the evidence is “weak” or “mixed”^{12,16} and often fail to address intervention usability and acceptability.¹³ It is important to understand how an intervention works in and suits a given context.^{15,17} Integrating and implementing all currently available evidence on Web-based interventions for cancer survivors, rather than simply definitive trials, could inform decisions regarding intervention design and delivery.¹⁷

Systematic reviews have started to incorporate a wider range of study designs (e.g., qualitative research) to address questions relating to intervention processes and acceptability.^{14,18} Some review approaches, such as intervention component analysis (ICA), can be used to interpret variations in findings of different interventions and allow comparisons to be made across studies with similar objectives, but which may be different in many respects.¹⁹ Thematic synthesis¹³ has been used to evaluate intervention need, appropriateness, and acceptability. The method adheres to key principles of systematic reviews,¹⁸ using rigorous and explicit methods to synthesize primary research, while incorporating the experiences and views of intervention participants. Findings from ongoing or qualitative research may not lead to firm conclusions about the

effectiveness of the intervention, yet may help researchers to identify important issues relating to trial feasibility for future work.²⁰ Identifying components in a multicomponent intervention that are likely to be necessary for trial implementation² can inform a novel, composite online intervention that meets the needs of cancer survivors.²¹

In this review, we drew on thematic synthesis¹³ and ICA¹⁹ to extract and analyze data from a range of studies with different designs. The research question was “which features of Web-based interventions for breast, prostate, and colorectal cancer survivors are important for acceptability, feasibility, engagement, and effectiveness?”

2 | METHODS

To inform decision making for intervention development purposes in a timely fashion, we followed rapid review methods²²⁻²⁵ to identify studies of interest. We used thematic synthesis for analyzing the data, also drawing on approaches used in ICA.¹⁹ We adhered to the AMSTAR: A Measurement Tool to Assess Reviews criteria²⁶ (see Appendix A for further details).

2.1 | Search

Inclusion and exclusion criteria are outlined in Table 1. The research question and search terms were defined by using Population, Intervention, Comparison, Outcome, Study Design criteria.²⁸ We sought to identify qualitative and quantitative studies relating to Web-based interventions designed to improve QoL in adults who have completed primary treatment for breast, prostate, and colorectal cancer. Interventions that included participants with a variety of cancer types were included, if at least 1 of the 3 cancers of interest was represented in the sample. These interventions were included as they

TABLE 1 Inclusion and exclusion criteria of studies in review (based on Population, Intervention, Comparison, Outcome, Study Design [PICOS] criteria)

| | Inclusion Criteria | Exclusion Criteria |
|---------------|--|--|
| Participants | Adults who have completed primary treatment for breast, prostate, and colorectal cancer (or interventions that included a variety of cancer types and focused on quality of life issues considered likely to be shared across all cancers) | <ul style="list-style-type: none"> • Specific target groups that were not generalizable to breast, colorectal, or prostate cancer survivors (during primary treatment; pediatric samples, rare cancers, metastatic cancers, etc). • Studies where the focus was on needs associated with specific cancer types (e.g., a focus on specific needs associated with gynecological/head and neck cancers) • Interventions that took place during primary treatment |
| Interventions | Online, e-health, or Web-based interventions designed to improve QoL in adults who have completed primary treatment for cancer | <ul style="list-style-type: none"> • Interventions delivered offline or analyses of online forum groups and interventions delivered solely via social media Web sites (e.g. Facebook) |
| Comparators | We did not include “comparison” (C) as this was not relevant to our research question. ²⁷ | |
| Outcomes | Quality of life and related outcomes (e.g., well-being and physical or mental health or functioning). Studies describing people's experiences, views, and perceptions of usability and/or acceptability data of interventions | <ul style="list-style-type: none"> • Studies that did not include data relating to actual intervention experience |
| Study design | Studies considered included surveys, focus groups, individual interviews, and data from feasibility and pilot trials, RCTs, and process evaluations | <ul style="list-style-type: none"> • Commentaries, audits, and review articles not included |

generally focused on QoL issues deemed likely to be shared across all cancer types.

The search was undertaken in May 2016 by using electronic bibliographic databases (see Appendix B for search strategy).

Initial searches and screening of titles and abstracts were conducted before full-text copies were screened for inclusion or exclusion. TC and KS screened the papers for eligibility, with each author recording the reason for rejection of excluded studies. Differences between the 2 reviewers were resolved by discussion, with the involvement of a third reviewer if necessary (KB).

2.2 | Data extraction

All available information regarding intervention characteristics, experiences, and outcomes was extracted from sections 3 and 4, using a standardized data extraction form (see Table 3 for summary of data extracted).

Data were extracted electronically and treated as textual (qualitative) data. This included all text under the headings “procedures” or “methods,” “findings” or “results,” and “discussion” or “conclusions.” The authors’ interpretations in section 4 were included, as these can be considered qualitative evidence that may provide insights about the perceived strengths and weaknesses of interventions as well as the experience of development, use, and implementation.¹⁹

2.3 | Quality appraisal

To assess quality, we used the best practice quality appraisal tools for each different study design included in our study. As there were a number of different designs, we used different tools, including the Critical Appraisal Skills Programme quality assessment tools for quantitative and qualitative studies⁴⁵ and the Critical Appraisal of a Survey tool developed by the Center for Evidence-Based Management.²⁶

TC and KS tabulated quality assessments of the studies based on the categories used in the Confidence in the Evidence from Reviews of Qualitative research Approach for assessing the confidence of evidence from reviews of qualitative research⁴⁶ (see Table 2). We included studies regardless of study quality but provided quality assessment to assist the reader to determine the relative quality of each study included in the analysis (see Table 2).

TABLE 2 Quality assessment of included studies

| Study Quality | ST ^{*29,30} | WSDEI ^{**31} | STRIDE ³² | BREATH ^{33,34} | HN ^{***35} | PERC ^{****36} | KNW ^{*****37,38} | RESTORE ³⁹⁻⁴² | OncoWijzer ^{43,44} |
|-------------------------------------|----------------------|-----------------------|----------------------|-------------------------|---------------------|------------------------|---------------------------|--------------------------|-----------------------------|
| Methods, designs, and study conduct | ++ | ++ | ++ | ++ | – | ++ | – | ++ | + |
| Quality of data/effects achieved | ++ | ++ | + | + | + | ++ | + | + | + |
| Relevance | ++ | ++ | – –* | ++ | + | ++ | ++ | ++ | ++ |
| Overall study quality | ++ | ++ | + | ++ | – | ++ | + | ++ | + |
| Notes | – – = very low | | – = low | += medium | ++ = high | | *very specific population | | |

ST* indicates Survive and Thrive; WSDEI**, Web-based self-management exercise and diet intervention program; HN***, Health Navigation; PERC****, prostate cancer education and resources for couples; KNW*****, Kanker Nazorg Wijzer.

2.4 | Synthesis

We aimed to develop a description of the relevant features and outcomes of the interventions.^{13,19,47,48} Coding and analysis were carried out with iterative in-depth discussion of emerging themes between the coauthors. We conducted line-by-line open coding of the method, findings, and discussion sections of included studies. One paper deemed to be of high quality (RESTORE³²) was used to develop a coding manual, and we tested its reliability on 2 other papers. A sample paper was checked by a third coauthor (KB) to ensure coding consistency. The remaining texts were coded, with the authors discussing additional codes where any novel concepts were identified.¹³

2.5 | Analysis

The codes were organized into descriptive themes.¹³ The descriptive themes remained “close” to the reported findings. This process was data-driven and did not aim to fit the data to any particular research question.

Identified clusters of descriptive themes were used to generate analytical themes. The definitions of each of the themes can be seen in Appendix C. Analytical themes were constructed based on their relevance to the research question that we had outlined a priori. This process allowed us to derive our outcomes of interest from the data, based on prespecified aims of the research. Analytical themes are used to facilitate the development of new interpretive explanations or hypotheses.¹³ Our analytical themes grouped the descriptive themes into (i) outcomes and (ii) factors that might influence outcomes. We then engaged in a process of mapping these influential factors onto the outcomes. This allowed us to explore the relationship between them, to identify which features of Web-based interventions impact each of the individual outcomes.

3 | RESULTS

3.1 | Characteristics of papers and interventions

The PRISMA chart (Figure 1) shows the number of papers screened and reasons for inclusion/exclusion. In cases where multiple papers relating to the same intervention were included, each paper was identified by the name of the intervention. In total, 16 relevant papers

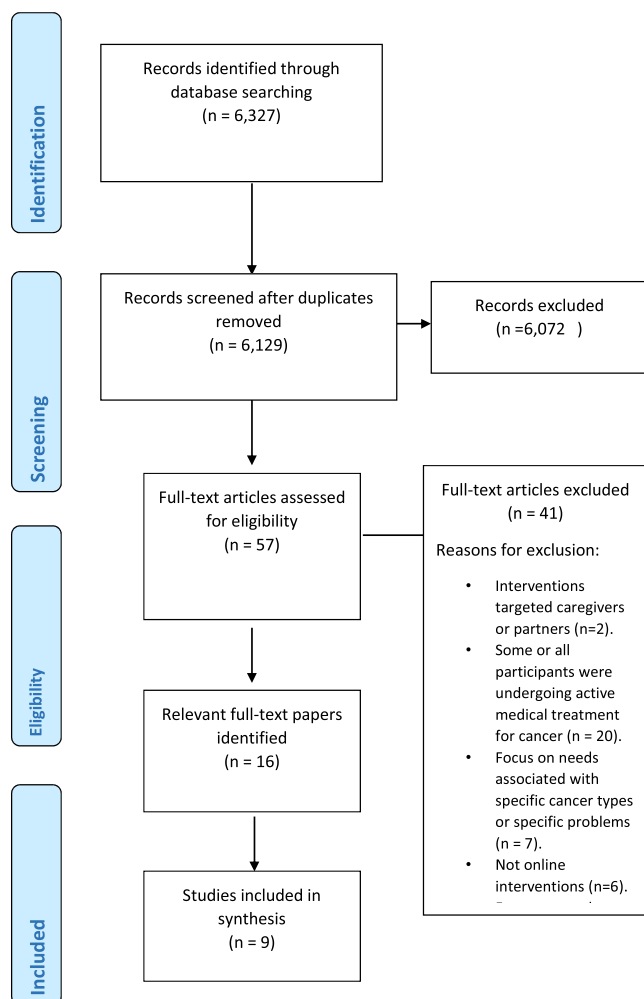


FIGURE 1 PRISMA flow diagram

pertaining to 9 interventions fulfilled all eligibility criteria for inclusion. Further details can be seen in Table 3.

Three trials focused on multiple health behavior changes: physical activity and diet. These were the *WSDEI (Health Planner)*,³¹ *Survive and Thrive*,^{29,30} and *Kanker Nazorg Wijzer*^{37,38} trials. Two trials (*RESTORE*^{32,38-40} and *Health Navigation*³⁵) addressed fatigue in cancer survivors. *BREATH*^{33,34} and *STRIDE*³² also specifically targeted particular outcomes (i.e., distress and physical activity). The *Oncowijzer*^{43,44} and *Prostate Cancer Education and Resources for Couples (PERC)*³⁶ studies focused on cancer survivors and their partners during the transition into survivorship (see Table 3 for trial details).

3.2 | Themes identified in this review

We identified 28 descriptive themes that we grouped into 5 analytical themes (see Figure 2). The first 4 themes addressed aspects of intervention designs and implementation of Web-based interventions. The themes were as follows: participant factors, characteristics of the online intervention, techniques used to change behavior, and preferred features of Web-based interventions.

These themes were seen as key factors that appeared to potentially influence the fifth analytical theme: the outcomes discussed in the papers including uptake, adherence and attrition, engagement, feasibility, efficacy, positive behavior change, and acceptability of the interventions.

To address the aims of the review, we present our analyses below in how each of the first 4 themes appeared to relate to each of the outcomes discussed in the papers. In reporting our findings, we have illustrated each concept not only by using the name of the study it originated from but also in the type of information source from which the code emerged. Codes derived from statements by study authors were marked with "Au," and participant sources were identified as "Ps." Quantitative evidence or statistic-based findings were identified with "Q" (i.e., Au, Ps, or Q).

3.3 | Uptake

Uptake included data concerning comments regarding recruitment, as well as patterns observed by the study authors. Individuals participated in the interventions due to perceived unmet care needs, personal interest, and motivation (Au).^{30,32,36,41,44} The characteristics of those who did not take up the intervention were often not recorded.

Technology was seen as a means of potentially increasing access to supportive care for those who cannot (or prefer not to) engage in traditional care, particularly those with sensitive symptoms and illness issues (Au; Ps).^{36,39,41} Intervention timing may influence uptake, with some authors recommending preparing for survivorship before treatment and continuing soon after completion (Au).⁴⁴ In *RESTORE*, the participants described the timing of participation (from 3 months post treatment) as "about right," with participants at least 1 year postdiagnosis indicating that they would have preferred access sooner (Ps; Q).^{39,41} One participant suggested that after a certain stage, the information may be less beneficial: "I suppose it's also that sense of wanting to kind of move on from it as much as possible...it would be a daily reminder"(Ps) [38; pg. 6].

3.4 | Adherence and attrition

Commonly reported reasons for attrition included being busy, cancer recurrence,^{31,35} family death, comorbid physical problems, and family illness (Q; Au).^{35,36} Demographic predictors of dropout included factors such as male gender, lower income, and higher levels of distress (Au; Q).^{30,34,36,41}

Higher attrition in the online intervention arms may have been due to participants struggling with the Web-based nature of the trial (Au; Ps).^{31,39,41,43} Some authors suggested that accessing the intervention added burden and/or required routine adjustments (Au; Ps).^{39,41,43} However, some studies reported lower levels of attrition than average for online trials for cancer survivors (Q; Au).^{31,35,36,38} This was attributed to the participants' motivational readiness to engage (Au)^{31,35} and the relevance of the content (Au).^{31,36,38} Other reasons suggested were convenience because the participants were able to access the intervention at their own pace, when it suited them (Au),^{31,35,36,38}

TABLE 3 Trial details

| Trial Name | Cancer Type | Intervention Target | Year | Country | Study Type | N |
|---------------------------------------|---|---|------|-----------------|--|-----------|
| Survive and Thrive ^{29,30} | Breast, ovarian, uterine, non-Hodgkin's lymphoma, colorectal, lung, thyroid, and oral | Encourage changes in health behaviors post treatment (including dieting, exercise, depression, and fatigue). | 2015 | USA | Randomized controlled trial Exploratory analyses of engagement | 352 20 |
| WSDEI (Health Planner) ³¹ | Breast | Promote positive dietary and exercise change post treatment. | 2014 | South Korea | Pilot randomized controlled trial | 59 |
| STRIDE ³² | Breast, prostate, and non-Hodgkin's lymphoma | Increase walking/physical activity. | 2014 | Australia | Qualitative pilot feasibility study | 8 |
| BREATH ^{33,34} | Breast | Support psychological adjustment posttreatment; reduce stress and improve empowerment. | 2015 | Netherlands | Multicenter randomized controlled trial Substudy analysis of usage | 150 70 |
| Health Navigation ³⁵ | Breast, colon, stomach, lung, uterine, and thyroid | Online tailored education program for managing/ reducing cancer-related fatigue | 2012 | South Korea | Randomized controlled trial | 273 |
| PERC ³⁶ | Prostate | Online education and resources aimed to increase QoL for patients (e.g., symptom management) and partners (increase communication etc) | 2015 | USA | Mixed methods feasibility and acceptability pilot study | 26 |
| Kanker Nazorg Wijzer ^{37,38} | Unspecified (any cancer type accepted) | Improve self-management of lifestyle (e.g., physical activity, diet, and smoking) and psychosocial challenges post treatment | 2016 | the Netherlands | | |
| Randomized controlled trial | 432 | | | | | |
| RESTORE ³⁹⁻⁴² | Breast, colorectal, head/neck, liver, and prostate | Reducing cancer-related fatigue and increasing self-efficacy | 2016 | UK | Multicenter proof of concept randomized controlled trial Qualitative process evaluation | 163 19 |
| Oncowijzer ^{43,44} | Breast | Provide information for survivors (various issues: physical, psychological, work/social, etc) and partners (e.g., relationships and care giving). | 2014 | Belgium | Design and process evaluation | 134 |

and the ease of use and accessibility of the content (Au).^{31,35,36,38}

3.5 | Engagement

Web-based interventions allow researchers to identify patterns of use and how these may be related to outcomes (Au).^{30,38,39,43,49}

Additional research to better understand these processes was recommended (Au).^{30,38,39,43,49} Lower levels of engagement may be linked to some participants experiencing an early effect, making further use of the intervention redundant (Au).⁴⁹ However, generally, evidence suggested that participants who engaged more with the interventions appeared to get the most benefit (Q).^{30,38,39} The authors highlighted the importance of actively motivating participants to engage

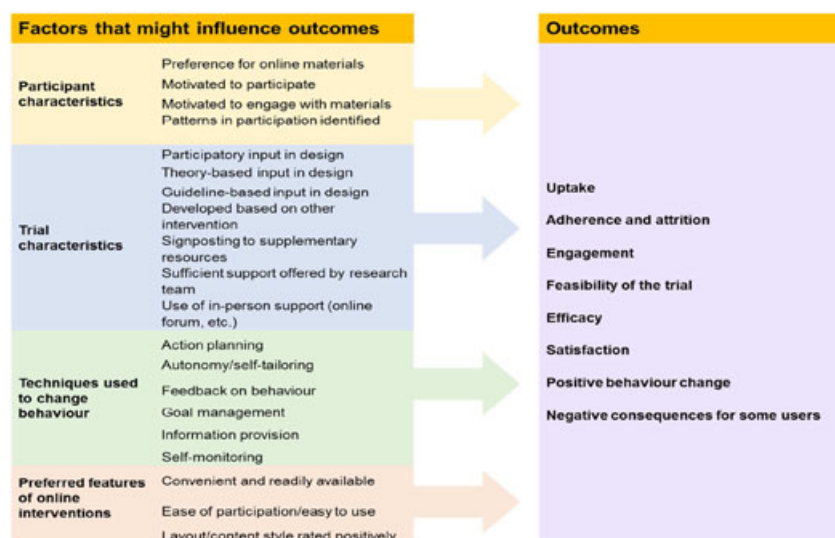


FIGURE 2 Depiction of analytical themes and the descriptive themes from which they emerged

with the online intervention content, for example, using prompts and reminders (Au).³⁰ For example, usage in the *BREATH* intervention varied considerably and logins were on the day the weekly reminder was sent (Q).⁴⁹

The participants appeared to engage more when they reported unmet needs, lower self-esteem, and social support needs (Au; Q).^{43,49} The participants often chose to access content pertaining to physical and social consequences of cancer, returning to work, and communicating with others (Au; Ps; Q).^{29,30,44} Other cited factors for engagement included computer literacy and socioeconomic status. High usage rates in the *PERC* trial were deemed encouraging by study authors, particularly because the intervention targeted older adults (Au).³⁶ The exclusion of certain groups (e.g., limited computer literacy and elderly) was a concern for many authors (Au).^{31,35,39,41,43}

Web-based interventions did not appeal to all, and some individuals did not ever access the intervention (Au; Q).⁴³ Reasons for not fully engaging included illness burden, perceiving content as irrelevant, not useful, or not required (Au; Ps).^{31,32} Barriers to using these interventions included glitches and problems with functionality (such as difficulties logging on; passwords being refused or forgotten) (Au; Ps).^{39,41}

3.6 | Feasibility

Web-based interventions were seen as a feasible approach to providing supportive care after cancer (Au)^{30-32,34-36,38,43} and were considered particularly beneficial for those who have limited access to supportive care (Au).^{30,32,36} Ease of participation was an important facilitator of engagement, and the participants required low levels of assistance to use the interventions (Au; Q).^{30-32,34-36,38,39,43} Easy to use, interesting, informative, and comprehensible interventions were found to be feasible (Au).^{30,36,38,39,43} Accessibility appeared to be improved by involving stakeholders during intervention protocol development and end users during usability testing (Au).^{34,36-39,41,43}

Web-based interventions were designed to be incorporated into participants' lives easily, yet some required additional work and/or routine adjustments for participants (Au).^{30-32,35-37,40,43} This was particularly difficult when the participant had external burdens (e.g., competing demands such as family and work commitments) or was feeling unwell (e.g., experiencing pain or fatigue) (Au; Ps).^{32,41} Dealing with technical difficulties and completing fatigue diaries were sometimes cited as burdensome by the participants (Au; Ps; Q).^{32,36,41}

3.7 | Efficacy

In many cases, due to the exploratory nature of some of the trials, the limited data, small sample sizes, or lack of a comparator group meant that it was not possible to draw firm conclusions about the efficacy of these interventions.^{32,34-36}

3.8 | Satisfaction

User feedback was sometimes used to improve the intervention. The participants displayed a preference for content chosen by users who

contributed to the design of the intervention (Au; Q).⁴³ (Au).^{36,41} The participants also liked convenient and readily available Web-based interventions that had content that was clear, novel, and well organized (Au; Ps; Q).^{30-32,35,36,41,43} In some studies, specific content was recommended, but the participants could select topics that had a higher priority for them (Au).^{30,37,43} Individuals liked being able to choose the elements of the intervention that they engaged with (Au; Ps).^{32,38,43} which was seen as a means to reduce information overload (Au).^{32,35-37,40,43}

Findings were mixed regarding the use of in-person support. Social networking components (e.g. Web mail and discussion boards) were perceived as useful (Au; Q; Ps).^{29,30,32} However, the participants differed in the extent to which they engaged with social networking features (Au; Q).^{29,30,32} In some trials, the participants preferred to read posts rather than to comment themselves. Others indicated that these features did not interest them (Ps).^{29,30,32}

Many individuals considered Web-based interventions superior to offline comparators (Ps).^{39,41} The participants appreciated the ability to access straightforward information and valued material that addressed relevant issues such as feeling guilty, healing, achieving normality, and fears regarding recurrence (Ps; Au; Q).^{36,39,41,43} However, others found the interventions impersonal, simplistic, and vague (Q).^{32,43} and suggested incorporating more detailed or cancer-specific information and practical advice, as well as signposting to resources (Au; Ps).^{34,36,41} Some participants showed a preference for offline media and/or struggled with using an online intervention (Au; Ps).^{30-32,36,39,41,43} The authors recommended that Web-based interventions should be part of a multi-modal care model, supplemented by other forms of posttreatment care (e.g., informative brochures and consults with a psychologist) (Au).^{31,33,36,41}

3.9 | Positive behavior change

Information provision was a commonly used strategy to promote behavior change (Au).^{36-39,43} This included signposting to existing supplementary support resources and resources intended to facilitate follow-up conversations with healthcare professionals (Au; Ps).^{34,36,38,39} Established national and international guidelines informed the content of many interventions (Au).^{30-32,35,36,38,39} Other interventions were based on modified versions of preexisting interventions (Au).^{30,37,38}

Goal management prompted the participants to prioritize activities, recognize limitations, and engage in self-reflection about lifestyle and behavior and was widely regarded as motivating (Au; Ps).^{29,32,35,37-39,41} *STRIDE* included step goal approach based on goal setting theory, which promoted goals that were perceived as attainable with respect to the individual's capacity. This reduced feelings of guilt on days the participants felt unwell (Au; Ps).³²

Self-monitoring helped the participants to better recognize symptom patterns, reflect on their progress, increase personal accountability, and develop self-awareness (Au; Ps).^{31,32,35,41} However, diary keeping was sometimes difficult to incorporate into

daily routine (Au; Ps).^{39,41} Behavior feedback on progress potentially increased perceived self-efficacy (Au).^{30,31,36,41}

Action planning was used in some studies to improve motivation and may positively influence changes in health outcomes (Au; Q)^{30,31,35,39} but could sometimes be problematic (see section 3.10).

3.10 | Negative consequences for some users

Some authors did not consider any adverse events as attributable to the study (Au).^{35,39} However, in the *RESTORE* trial, some users considered the content of the intervention to be more suited to those undergoing treatment and therefore an unwelcome reminder of their cancer (Au; Ps).⁴¹ The authors of the *Survive and Thrive* trial found that attempting action planning and failing led to reduced activity levels in some cases (Q).³⁰ Action planning strategies may not suit those who continually fail to complete their action plans (Au).³⁰ Some couples in *PERC* reported decreased relationship satisfaction and communication about cancer (Ps; Q),³⁶ with some individuals reporting increased sexual dysfunction over time (Ps; Q).³⁶ The participants may have found it difficult to adjust to novel ways of relating to each other: the intervention may have introduced concepts and ideas that were different to their long-standing relationship and communication patterns, leading to participants finding it challenging to talk about sensitive topics they may not have discussed before (Au).³⁶ In the *BREATH* study, 1 woman was admitted to a psychiatric clinic (Q).³⁴ The authors considered this as a serious adverse event (Au).³⁴ Further, a pattern emerged where more high-distress survivors in the intervention group showed a clinical deterioration (Q).³⁴ High-distress breast cancer survivors may need a more intensive intervention than *BREATH* (Au).³⁴

4 | DISCUSSION

The aim of our review was to synthesize findings from early research on Web-based interventions for posttreatment cancer survivors to inform intervention design. For our analysis (see Figure 2), we grouped together a variety of reported outcomes that were potential indicators of the likely success of the interventions we reviewed. The theme of “outcomes” referred to not only trial efficacy and behavior change but also participant uptake, engagement, adherence, and satisfaction. The potential for the interventions to be associated with negative consequences for some users was also considered as an important potential trial outcome. We then examined how these outcomes were related to, or impacted by, commonly reported factors that might influence the results of (or conclusions reached about) a trial. These were grouped into 4 themes: the characteristics of participants (e.g., motivation and usage patterns), trial characteristics (e.g., design and procedures involved), techniques used to change behavior, and features of Web-based interventions that were preferred by end-users (e.g., perceptions of the interventions as accessible and easy to use).

Our findings highlighted the importance of matching the intervention to the unique characteristics of the participants. Autonomy

and choice is particularly important for cancer survivors, given their idiosyncratic needs that can vary greatly during the posttreatment period.^{43,50,51} Considering participant preferences is likely to be a key factor in the successful implementation of Web-based interventions.⁵² User-centered approaches can help intervention developers to identify intervention features that are likely to be most acceptable and persuasive to appropriate intervention users.⁵²

Identifying and recruiting the appropriate target sample into the trial is likely to be a crucial part of intervention planning so that the interventions or their content is not perceived as irrelevant, unnecessary, or vague. User characteristics that may impact interventions include age, experience using computers, or ability.⁵³ However, we found that older age was not always a barrier to use. This was surprising, as some research has indicated that factors such as impatience, physical and mental limitations, mistrust, and time issues may impede use in older people.⁵⁴ Some recent reviews in noncancer groups have concluded that Web-based interventions are likely to have potential in an older population,⁵⁵⁻⁵⁷ due to increases in the use of electronic devices in this group.⁵⁸

Our findings were largely consistent with noncancer specific reviews that have suggested that efficacy of Web-based interventions can vary due to factors including the timing of the interventions, targeting the wrong patients, or using an unsuitable mode of delivery.^{59,60} However, our analysis identified specific issues that may be useful to consider when designing interventions for this group. For example, the studies reached inconsistent conclusions about whether content was more suitable to individuals with a current diagnosis or soon after treatment, or those at later stages of survivorship. This indicates that content may need to be tailored to stage-specific needs of those at different stages of the cancer trajectory. Further, it was unclear whether social networking features provide any added benefit. Web-based interventions are likely to function effectively without social networking components and with relatively little input from researchers or clinical staff.⁶¹

The findings of this review add to the literature on the use of behavior change techniques such as self-monitoring of behavior, planning, goal setting and review, and feedback on performance.⁶²⁻⁶⁴ In the interventions we assessed, self-monitoring and action planning seemed to be associated with positive behavior change in many cases. However, these techniques occasionally proved difficult to incorporate into routines due to conflicting priorities after cancer, and even led to deleterious consequences in cases where participants failed to change behavior. The selection of techniques to change behaviors should be appropriate to the characteristics of those participating in the trial, to avoid causing inadvertent harm.⁶⁵

4.1 | Strengths and limitations

The findings we present are largely descriptive due to the exploratory nature of this method. Without a strong evidence base (of homogenous datasets), it would not have been appropriate to attempt to combine the data by using quantitative methods. We found that there was also not sufficient evidence of effectiveness in the included studies to undertake ICA.

Our rationale for reviewing this heterogeneous group of complex interventions was to be able to learn from early stage research in this field, but we acknowledge that due to these limitations in the data, we cannot reach definitive conclusions on what might comprise an effective intervention. Using our exploratory method, we have developed an elementary model broadly linking the intervention characteristics to outcomes. However, regarding the implications of our findings, we were unable to generate hypotheses about exactly how different intervention characteristics might influence different outcomes, as only partial data were available for each intervention characteristic and outcome.

It was not always possible to ascertain a complete picture of the intervention design process, and some studies did not provide details of challenges faced throughout the trial process. Further, it is likely that information about trial feasibility and uptake may not often be published. In line with rapid review methodology, we recognize that the search was not comprehensive. Due to time constraints, we did not include grey literature and we did not follow up with the authors if we were unable to access papers.

A strength of our method is that we were able to integrate data from a variety of study designs at an early stage of development of the literature in this field. The identification of common themes across the variety of included studies suggests that it is possible to combine, and learn from, papers reporting different study designs, including qualitative reports and findings of early-stage interventions. The inclusion of both individual author and participant interpretations allowed us to go beyond intervention descriptions and explore real-world experiences of Web-based interventions for cancer survivors.¹⁹ This approach can help to inform the development of interventions when there is limited definitive trial evidence available. An unexpected benefit of this review was that by combining data from a number of early studies, it was possible to collate information about rare but potentially important risks of negative consequences for some users, which is particularly valuable for intervention design.

Individuals with particular characteristics (i.e., in a relationship, middle aged, Caucasian, and female) were overrepresented in most of the studies, limiting the ability to establish external validity.⁵³ Developers must therefore be aware that it is unclear if specific subgroups would benefit from Web-based interventions (specifically socioeconomically disadvantaged groups, low-health literacy groups, and ethnic minorities), which may impact the validity of any findings.⁶⁶ Recruitment of heterogeneous samples and analysis of usage patterns to better contextualize findings is recommended.

5 | CONCLUSIONS

The findings provide insights into factors that may influence the uptake, acceptability, feasibility, adherence, attrition, and positive behavior change in Web-based interventions for cancer survivors. Importantly, our analysis highlights specific issues for consideration when designing Web-based interventions for those who have completed treatment for cancer. Cancer survivors appear to value

interventions that recognize their changing needs and are delivered at the right stage of the cancer trajectory. The findings indicate that future work should initially concentrate on identifying the optimal stage of cancer survivorship to facilitate optimum intervention delivery.

We could not reach definitive conclusions about which factors are likely to lead to efficacious and effective interventions for this group, but as the area of research grows, future research can build on our findings by conducting comprehensive and systematic reviews.

We analyzed data from a variety of study designs at an early stage of development to inform the emerging field of the literature about Web-based interventions for survivors of prostate, colorectal, and breast cancer. The method of synthesizing early stage research described in this paper may enable researchers to generate useful hypotheses about why interventions work or do not work as intended. This method may well have application in other areas, beyond cancer survivorship.

5.1 | Clinical implications

It appears important to ensure that both the content and the timing of interventions are appropriate to the particular and varying support needs of cancer survivors. The participants in these studies appeared to have idiosyncratic motivations and abilities due to factors including side effects and disabilities, reprioritization of goals after treatment, and concerns about the extent to which they could engage in behavior change. The incorporation of specific behavior change techniques into interventions for this group requires further exploration to enable us to better understand how interventions can be carefully designed to match users' capabilities and avoid inadvertent negative consequences. User involvement in and feedback on the intervention during development may help to ensure that it is accessible, usable, and appropriate.

FUNDING INFORMATION

This study was funded by the National Institute for Health Research (NIHR) Programme Grants for Applied Research (RP-PG-0514-20001).

CONFLICT OF INTEREST

Teresa Corbett declares that she has no conflict of interest. Karpaul Singh declares that he has no conflict of interest. Liz Payne declares that she has no conflict of interest. Katherine Bradbury declares that she has no conflict of interest. Claire Foster declares that she has no conflict of interest. Eila Watson declares that she has no conflict of interest. Alison Richardson declares that she has no conflict of interest. Paul Little declares that he has no conflict of interest. Lucy Yardley declares that she has no conflict of interest.

ETHICAL APPROVAL

This article does not contain any studies with human participants or animals performed by any of the authors.

ORCID

Teresa Corbett  <http://orcid.org/0000-0002-5620-5377>

REFERENCES

- Maddams H, Moller D, Brewster A, et al. Cancer prevalence in the United Kingdom: Estimates for 2008. *Br J Cancer*. 2009;101:541-547.
- Elliott J, Fallows A, Staetsky L, et al. The health and well-being of cancer survivors in the UK: Findings from a population based survey. *Br J Cancer*. 2011;105:S11-S20.
- Willems RA, Bolman CA, Mesters I, Kanera IM, Beaulen AA, Lechner L. Cancer survivors in the first year after treatment: The prevalence and correlates of unmet needs in different domains. *Psycho-Oncology*. 2016;25(1):51-57.
- El-Shami K, Oeffinger KC, Erb NL, et al. American Cancer Society colorectal cancer survivorship care guidelines. *CA Cancer J Clin*. 2015;65(6):427-455.
- Chou WY, Liu B, Post S, Hesse B. Health-related Internet use among cancer survivors: Data from the Health Information National Trends Survey, 2003-2008. *J Cancer Surviv*. 2011;5(3):263-270.
- Webb T, Joseph J, Yardley L, Michie S. Using the Internet to promote health behavior change: A systematic review and meta-analysis of the impact of theoretical basis, use of behavior change techniques, and mode of delivery on efficacy. *J Med Internet Res*. 2010;12(1):e4.
- Griffiths F, Lindenmeyer A, Powell J, Lowe P, Thorogood M. Why are health care interventions delivered over the Internet? A systematic review of the published literature. *J Med Internet Res*. 2006;8(2):e10.
- Kuijpers W, Groen WG, Aaronson NK, van Harten WH. A systematic review of Web-based interventions for patient empowerment and physical activity in chronic diseases: Relevance for cancer survivors. *J Med Internet Res*. 2013;15(2):e37.
- Ventura F, Öhlén J, Koinberg I. An integrative review of supportive e-health programs in cancer care. *Eur J Oncol Nurs*. 2013;17(4):498-507.
- Scott DA, Mills M, Black A, et al. Multidimensional rehabilitation programmes for adult cancer survivors. *Cochrane Database Syst Rev*. 2013;(3):CD007730.
- Ferrer RA, Huedo-Medina TB, Johnson BT, Ryan S, Pescatello LS. Exercise interventions for cancer survivors: A meta-analysis of quality of life outcomes. *Ann Behav Med*. 2011;41(1):32-47.
- Peters MD. Multidimensional rehabilitation programs for adult cancer survivors. *Clin J Oncol Nurs*. 2014;18(6):722-723.
- Thomas J, Harden A. Methods for the thematic synthesis of qualitative research in systematic reviews. *BMC Med Res Methodol*. 2008;8(1):1.
- Petticrew M. Time to rethink the systematic review catechism? Moving from 'what works' to 'what happens'. *Systematic Rev*. 2015;4(1):1.
- Thomas J, O'Mara-Eves A, Brunton G. Using qualitative comparative analysis (QCA) in systematic reviews of complex interventions: A worked example. *Systematic Rev*. 2014;3(1):1.
- McAlpine H, Joubert L, Martin-Sanchez F, Merolli M, Drummond KJ. A systematic review of types and efficacy of online interventions for cancer patients. *Patient Educ Couns*. 2015;98(3):283-295.
- Baxter S, Killoran A, Kelly M, Goyder E. Synthesizing diverse evidence: The use of primary qualitative data analysis methods and logic models in public health reviews. *Public Health*. 2010;124(2):99-106.
- Barnett-Page E, Thomas J. Methods for the synthesis of qualitative research: A critical review. *BMC Med Res Methodol*. 2009;9(1):1.
- Sutcliffe K, Thomas J, Stokes G, Hinds K, Bangpan M. Intervention component analysis (ICA): A pragmatic approach for identifying the critical features of complex interventions. *Systematic Rev*. 2015;4(1):1.
- Ioannidis JP, Greenland S, Hlatky MA, et al. Increasing value and reducing waste in research design, conduct, and analysis. *Lancet*. 2014;383(9912):166-175.
- Glasziou PP, Chalmers I, Green S, Michie S. Intervention synthesis: a missing link between a systematic review and practical treatment (s). *PLoS Med*. 2014;11(8):e1001690.
- Polisena J, Garritty C, Umscheid CA, et al. Rapid Review Summit: An overview and initiation of a research agenda. *Systematic Rev*. 2015;4(1):1.
- Khangura S, Polisena J, Clifford TJ, Farrah K, Kamel C. Rapid review: An emerging approach to evidence synthesis in health technology assessment. *Int J Technol Assess Health Care*. 2014;30(01):20-27.
- Varker T, Forbes D, Dell L, et al. Rapid evidence assessment: Increasing the transparency of an emerging methodology. *J Eval Clin Pract*. 2015;21(6):1199-1204.
- Harker J, Kleijnen J. What is a rapid review? A methodological exploration of rapid reviews in health technology assessments. *Int J Evid Based Healthc*. 2012;10:397-410.
- CEBM. Critical appraisal of a survey Oxford Center for Evidence-based Medicine. Adapted from Crombie, The Pocket Guide to Critical Appraisal; the critical appraisal approach used by the Oxford Centre for Evidence Medicine, checklists of the Dutch Cochrane Centre, BMJ editor's checklists and the checklists of the EPPI Centre. 2011. <https://www.cebm.org/wp-content/uploads/Critical-Appraisal-Questions-for-a-Survey.pdf>. Accessed May 2016.
- Cooke A, Smith D, Booth A. Beyond PICO the SPIDER tool for qualitative evidence synthesis. *Qual Health Res*. 2012;22(10):1435-1443.
- Moher D, Liberati A, Tetzlaff J, Altman DG, Group P. Preferred reporting items for systematic reviews and meta-analyses: The PRISMA statement. *PLoS Med*. 2009;6(7):e1000097.
- Chen Z, Koh PW, Ritter PL, Lorig K, Bantum EOC, Saria S. Dissecting an online intervention for cancer survivors four exploratory analyses of Internet engagement and its effects on health status and health behaviors. *Health Educ Behav*. 2015;42(1):32-45.
- Bantum EOC, Albright CL, White KK, et al. Surviving and thriving with cancer using a Web-based health behavior change intervention: Randomized controlled trial. *J Med Internet Res*. 2014;16(2):e54.
- Lee MK, Yun YH, Park H-A, Lee ES, Jung KH, Noh D-Y. A Web-based self-management exercise and diet intervention for breast cancer survivors: Pilot randomized controlled trial. *Int J Nurs Stud*. 2014;51(12):1557-1567.
- Frensham LJ, Zarnowiecki DM, Parfitt G, King S, Dollman J. The experiences of participants in an innovative online resource designed to increase regular walking among rural cancer survivors: A qualitative pilot feasibility study. *Support Care Cancer*. 2014;22(7):1923-1929.
- van den Berg SW, Gielissen MF, Ottevanger PB, Prins JB. Rationale of the BREast cancer e-heaTH [BREATH] multicentre randomised controlled trial: An Internet-based self-management intervention to foster adjustment after curative breast cancer by decreasing distress and increasing empowerment. *BMC Cancer*. 2012;12(1):1.
- van den Berg SW, Gielissen MF, Custers JA, van der Graaf WT, Ottevanger PB, Prins JB. BREATH: Web-based self-management for psychological adjustment after primary breast cancer—results of a multicenter randomized controlled trial. *J Clin Oncol*. 2015;33(25):2763-2771.
- Yun YH, Lee KS, Kim Y-W, et al. Web-based tailored education program for disease-free cancer survivors with cancer related fatigue: A randomized controlled trial. *J Clin Oncol*. 2012; 30(12):1296-1303.

36. Song L, Rini C, Deal AM, et al., editors. Improving couples' quality of life through a Web-based prostate cancer education intervention. *Oncol Nurs Forum*. 2015;42(2):183-192.
37. Willems RA, Bolman CA, Mesters I, Kanera IM, Beaulen AA, Lechner L. The Kanker Nazorg Wijzer (Cancer Aftercare Guide) protocol: The systematic development of a Web-based computer tailored intervention providing psychosocial and lifestyle support for cancer survivors. *BMC Cancer*. 2015;15(1):1.
38. Kanera IM, Bolman CA, Willems RA, Mesters I, Lechner L. Lifestyle-related effects of the web-based Kanker Nazorg Wijzer (Cancer Aftercare Guide) intervention for cancer survivors: a randomized controlled trial. *J Cancer Surviv*. 2016;10(5):883-897.
39. Foster C, Grimmett C, May CM, et al. A Web-based intervention (RESTORE) to support self-management of cancer related fatigue following primary cancer treatment: A multi-centre proof of concept randomised controlled trial. *Support Care Cancer*. 2016;24(6):2445-2453.
40. Grimmett C, Armes J, Breckons M, et al. RESTORE: An exploratory trial of an online intervention to enhance self efficacy to manage problems associated with cancer-related fatigue following primary cancer treatment: Study protocol for a randomized controlled trial. *Trials*. 2013;14(1):1.
41. Myall M, May CR, Grimmett C, et al. RESTORE: an exploratory trial of a Web-based intervention to enhance self management of cancer-related fatigue: findings from a qualitative process evaluation. *BMC Med Inform Decis Mak*. 2015;15(1):1.
42. Foster C, Calman L, Grimmett C, et al. Managing fatigue after cancer treatment: development of RESTORE, a Web-based resource to support self-management. *Psycho-Oncology*. 2015;24(8):940-949.
43. Pauwels E, Van Hoof E, Charlier C, Lechner L, De Bourdeaudhuij I. Design and process evaluation of an informative Web site tailored to breast cancer survivors' and intimate partners' post-treatment care needs. *BMC Res Notes*. 2012;5(1):1.
44. Pauwels EE, Charlier C, De Bourdeaudhuij I, Lechner L, Van Hoof E. Care needs after primary breast cancer treatment. Survivors' associated sociodemographic and medical characteristics. *Psycho-Oncology*. 2013;22(1):125-132.
45. Singh J. Critical Appraisal Skills Programme. *J Pharmacol Pharmacother*. 2013;4(1):76.
46. Lewin S, Glenton C, Munthe-Kaas H, et al. Using qualitative evidence in decision making for health and social interventions: An approach to assess confidence in findings from qualitative evidence syntheses (GRADE-CERQual). *PLoS Med*. 2015;12(10):e1001895.
47. Braun V, Clarke V. Using thematic analysis in psychology. *Qual Res Psychol*. 2006;3(2):77-101.
48. Braun V, Clarke V, Terry G. Thematic analysis. In: Rohlleder P, Lyons A, eds. *Qualitative research in clinical and health psychology*. Basingstoke: Palgrave MacMillan; 2014.
49. van den Berg SW, Peters EJ, Kraaijeveld JF, Gielissen MF, Prins JB. Usage of a generic Web-based self-management intervention for breast cancer survivors: substudy analysis of the BREATH trial. *J Med Internet Res*. 2013;15(8):e170.
50. Gao WJ, Yuan CR. Self-management programme for cancer patients: A literature review. *Int Nurs Rev*. 2011;58(3):288-295.
51. Chambers SK, Ng SK, Baade P, et al. Trajectories of quality of life, life satisfaction, and psychological adjustment after prostate cancer. *Psycho-Oncology*. 2017;26(10):1576-1585.
52. Yardley L, Morrison L, Bradbury K, Muller I. The person-based approach to intervention development: Application to digital health-related behavior change interventions. *J Med Internet Res*. 2015;17(1):e30.
53. Glasgow RE, Klesges LM, Dziewaltowski DA, Bull SS, Estabrooks P. The future of health behavior change research: What is needed to improve translation of research into health promotion practice? *Ann Behav Med*. 2004;27(1):3-12.
54. Gatto SL, Tak SH. Computer, Internet, and e-mail use among older adults: Benefits and barriers. *Educ Gerontol*. 2008;34(9):800-811.
55. Kaufman D, Sauvé L, Renaud L, Sixsmith A, Mortenson B. Older adults' digital gameplay patterns, benefits, and challenges. *Simulation & Gaming*. 2016;47(4):465-489.
56. Beishuizen CR, Stephan BC, van Gool WA, et al. Web-based interventions targeting cardiovascular 1 risk factors in middle-aged and older people: A systematic review and meta-analysis. *J Med Internet Res*. 2016;18(3):e55.
57. Aalbers T, Qin L, Baars MA, de Lange A, Kessels RP, Rikkert MGO. Changing behavioral lifestyle risk factors related to cognitive decline in later life using a self-motivated eHealth intervention in Dutch adults. *J Med Internet Res*. 2016;18(6):e171.
58. Smith A. Older adults and technology use. 2014 <http://www.pewinternet.org/2014/04/03/older-adults6and-technology-use/>. Accessed November 2016.
59. McAlpine H, Joubert L, Martin-Sanchez F, Merolli M, Drummond KJ. A systematic review of types and efficacy of online interventions for cancer patients. *Patient Educ Couns*. 2015;98(3):283-295.
60. Stacey FG, James EL, Chapman K, Courneya KS, Lubans DR. A systematic review and meta-analysis of social cognitive theory-based physical activity and/or nutrition behavior change interventions for cancer survivors. *J Cancer Surviv*. 2015;9(2):305-338.
61. Eysenbach G, Powell J, Englesakis M, Rizo C, Stern A. Health related virtual communities and electronic support groups: Systematic review of the effects of online peer to peer interactions. *BMJ*. 2004;328(7449):1166.
62. Greaves CJ, Sheppard KE, Abraham C, et al. Systematic review of reviews of intervention components associated with increased effectiveness in dietary and physical activity interventions. *BMC Public Health*. 2011;11(1):1-12.
63. Michie S, Abraham C, Whittington C, McAteer J, Gupta S. Effective techniques in healthy eating and physical activity interventions: A meta regression. *Health Psychol*. 2009;28(6):690.
64. Anderson ES, Winett RA, Wojcik JR, Williams DM. Social cognitive mediators of change in a group randomized nutrition and physical activity intervention social support, self-efficacy, outcome expectations and self-regulation in the Guide-to-Health Trial. *J Health Psychol*. 2010;15(1):21-32.
65. Ogden J. Do no harm: balancing the costs and benefits of patient outcomes in health psychology research and practice. *J Health Psychol*. 2016. <https://doi.org/10.1177/1359105316648760> [Epub ahead of print].
66. Partridge S, Juan SH, McGeechan K, Bauman A, Allman-Farinelli M. Poor quality of external validity reporting limits generalizability of overweight and/or obesity lifestyle prevention interventions in young adults: a systematic review. *Obes Rev*. 2015;16(1):13-31.

How to cite this article: Corbett T, Singh K, Payne L, et al. Understanding acceptability of and engagement with Web-based interventions aiming to improve quality of life in cancer survivors: A synthesis of current research. *Psycho-Oncology*. 2018;27:22-33. <https://doi.org/10.1002/pon.4566>

APPENDIX A. PROCEDURE OF THE REVIEW

| | |
|---------------------------|--|
| Rapid review | A rapid review of the literature was conducted in under 6 months. Due to the early stage literature available, we sought to thematically synthesise the findings from the heterogeneous studies rather than combine the data in any meta-analytic way. |
| Search^a | <p>LP conducted the initial searches.</p> <p>LP and TC independently screened titles and abstracts. Titles not relevant to this review were removed.</p> <p>TC and KS independently screened the remaining titles and abstracts for eligibility. Ineligible studies were excluded, with each author recording the reason for rejection.</p> <p>Full-text copies were screened when there was not sufficient information to definitively include or exclude based on the abstract.</p> <p>Differences between the two reviewers were resolved by discussion, with the involvement of a third reviewer if necessary (KB).</p> |
| Data Extraction | <p>TC and KS independently extracted all available information regarding intervention characteristics, experiences, and outcomes from the Results and Discussion sections of the papers, using a standardised data extraction form (see Table 3). Findings were extracted regardless of their direction (i.e. positive/negative), or extent of intervention effect.</p> <p>Data was extracted electronically and was treated as textual (qualitative) data.</p> |
| Quality Appraisal | <p>Quality Appraisal was performed by TC and KS on each study independently and then discussed. The Critical Appraisal Skills Programme (CASP) quality assessment tools were used for quantitative and qualitative studies [23] and the Critical Appraisal of a Survey tool developed by the centre for Evidence-Based Management [24] was used for studies with survey designs.</p> |
| Synthesis | <p>QSR's NVivo software was used for qualitative data analysis. Thematic synthesis was used to combine data from qualitative and quantitative studies (including RCTs) [11].</p> <p>A paper deemed to be of high quality (<i>RESTORE</i> (32)) was used to develop a coding manual^a</p> <p>TC and KS carried out the coding and analysis, with iterative in-depth discussion of emerging themes with LY and KB.</p> |
| Analysis | <p>We grouped codes according to similarities. These were then organised into 27 descriptive themes [11].</p> <p>Inductive thematic analysis was employed to provide narrative structure to the descriptive codes.</p> <p>The descriptive themes were grouped into analytical themes including</p> <ol style="list-style-type: none"> 1. Outcomes (Uptake; Adherence and Attrition; Engagement; Feasibility; Efficacy; Positive Behaviour Change; Acceptability of the Intervention) 2. Factors that might influence outcomes (Participant factors; Characteristics of the online intervention; Techniques used to change behaviour; Preferred features of web-based interventions). |

^aClaire Foster and Lucy Yardley were co-authors on the study deemed to be of high quality that was used to generate the initial coding manual.

APPENDIX B. DETAILS OF SEARCH STRATEGY

| | |
|---|--|
| Databases searched: | MEDLINE(R) 1946 to April Week 4 2016; EMBASE 1996 to May 2016; CENTRAL, Web of Science, and PsycINFO (1996 to 2015). Additional key papers were identified from reference lists of relevant studies, and from author expertise. |
| Terms used in search strategy (modified for different databases) | <ul style="list-style-type: none"> • Cancer* or neoplasm* or carcinoma* or malignan* or tumor* or tumour* or oncolog* • Surviv* or post-treatment or "after treatment" or "cancer survivors" • Program* or intervention or trial * or train* or therap* or pilot or feasibility or RCT or "process evaluation" or evaluat* • Qualitative or grounded or interview or focus group* or ethnograph* or phenomenol* or view* or experien* OR descript* or survey* • Adher* or efficacy* or uptake or accept* or satisfact* or barriers or facilitate* or preference* • Psych* Counsel* psychotherap* or support* or health educat* or self-monit* or CBT or mindfulness or coping or strategy* or rehab* or selfcare or selfmanage* or selfhelp or self-help • Internet or online or digital or web or e-health or comput* or technolog* or telecommunication* or multimedia or PC or website or www or cellular phone or cell phone or mobile or smartphone or smart phone or electronic or ehealth or mhealth or m-health or telemedicine or text messag* or email or telehealth or teletherap* or telemonit* |

APPENDIX C. DEFINITION OF THEMES

| Analytical theme | Descriptive theme | Subtheme | Definition |
|---------------------------------------|---|---|---|
| Factors that might influence outcomes | Participant characteristics | Preference for online materials | Preferences, trust, perceived credibility and issues relating to use of online tools/computers/technology. |
| | | Motivated to participate | Factors that influenced recruitment/ the participants' decision to take part in the study initially. |
| | | Motivated to engage with materials | Relates to participation <i>during</i> the trial. Factors that influenced continued engagement |
| | Trial characteristics | Patterns in participation identified | Characteristics or factors that were predictive or potentially predictive of attrition |
| | | Participatory input in design | Intervention designed with input from target sample group or stakeholders. |
| | | Theory-based input in design | Authors describe the use of theory in planning or design |
| | | Guideline-based input in design | Authors describe the use of guidelines in planning or design |
| | | Developed based on other intervention | Authors describe the use of pre-existing intervention in planning or design |
| | | Signposting to supplementary resources | Intervention signposts or links out to pre-existing/ alternative sources (e.g. charity websites or other interventions) |
| | | Sufficient support offered by research team | Expression that support offered during the intervention was perceived as necessary, adequate or suitable. |
| | Techniques used to change behaviour | Use of in-person support (online forum, etc.) | Description of online support function being used in the intervention. Includes live chats, comment functions and online forums. |
| | | Action planning | Action planning, scheduling or planning as intervention strategy |
| | | Autonomy/self-tailoring | Autonomy, preferences and choice in activities as feature of intervention |
| | | Feedback on behaviour | Feedback to participants about progress as part of the intervention |
| | | Goal management | Goal setting and reviewing goals as part of the intervention |
| Outcomes | Preferred features of web-based interventions | Information provision | Information provision or education as behaviour change strategy in the intervention |
| | | Self-monitoring | Self-monitoring or diary keeping used in the intervention |
| | | Convenient and readily available | Description of the intervention being readily available and convenient to access. |
| | | Ease of participation/easy to use | How easy/burdensome was the intervention to fit in one's life (e.g. Daily routine)? Accessible and comprehensible: Skills required, learned or acquired to use the intervention itself (not general computing). Extent to which the intervention was easy to access, navigate, and use. |
| | | Layout/content style rated positively | The type/style of content provided (sensitive, specific, generic, simplistic, repetitive etc.). |
| | Uptake | | Descriptions related to recruitment into trial. Reasons for participating -participant's point of view (<i>must refer to thoughts before trial began</i>) <i>Note: take note of timing of comment- before or after intervention</i> |
| | Adherence and attrition | | Participant adherence to, and drop-out of, the trial. Through <i>trial</i> protocol (note difference from "engagement" or recruitment). |
| | Engagement | | Extent to which the user engaged with the intervention (i.e. extent of website use). Duration and/or frequency of intervention use (overall, per session etc.) |
| | Feasibility of the trial | | Description relating to the trial being easy to/or conveniently delivered. The effort or work required by the participant in the trial (e.g. questionnaires). |
| | Efficacy | | Efficacy or effectiveness of the trial in relation to specified outcomes (e.g. paper results/findings). |
| | Satisfaction | | Cancer survivor needs are met by intervention. Participants' reflections on taking part in the trial, and perceived benefits directly related to the intervention(s). |
| | Positive behaviour change | | Descriptions of the impact of behaviour change techniques on behaviour or antecedents of behaviour. Reports of changes in behaviour as a consequence of intervention participation, in line with study goals/objectives. |
| | Negative consequences for some users | | Negative consequences directly related to the intervention(s). Includes negative affect as a consequence of participation in the trial, and can include adverse events reported by study authors. |